

# Drugs-Forum

Documents Images Audio Video Chat Forum Blog Groups  
Home Wiki

[Drugs Forum](#) > [VARIOUS DRUG RELATED TOPICS](#) > [Drug related chemistry and extraction](#) > [Phenethylamine Chemistry](#) > [Methamphetamine Chemistry](#)

## Pseudo-ephedrine extraction

Welcome, [Quantum Dude](#).

You last visited: 11-10-2008 at 04:43  
[Private Messages](#): Unread 0, Total 103.

User CP ▾

FAQ n Rules ▾

New Posts

Search ▾

Quick Links ▾

Log Out

## Methamphetamine Chemistry Discussion of the synthesis of methamphetamine

### Donating Members Chatbox [Archives]

[The same rules apply as to the rest of the site.](#)











- 11/10/2008 22:13 [ThirdEyeFloond](#): Deff. the nicest european model he's found yet, sadly there seems to be no distributors of the All-American PC's here, and shipment from the US cost about as much as the cooker itself :/
- 11/10/2008 22:01 [pyroarchy](#): velly nice
- 11/10/2008 21:45 [ThirdEyeFloond](#): mmm SWIM just fell in love with a 13L pressure cooker <3, 237euro incl. shipping
- 11/10/2008 13:14 [savingJenniB](#): You fixed it real nice ~ 1,000 Thank Youes!!


**Users in the chatbox** : 9 user(s)

[Alfa](#), [NOly](#), [ThirdEyeFloond](#), [Quantum Dude](#), [Heretic.Ape.](#), [Metomni](#), [Bajeda](#), [pyroarchy](#), [snapper](#) 

Thread Tools ▾ Search this Thread ▾ Rating:  ▾ Display Modes ▾

-  [Psych0naut](#) [Pseudo-ephedrine extraction](#) 04-10-2006, 18:08
-  [Operacya\\_Y](#) [Nice work psyc0naut,...](#) 04-10-2006, 19:11
-  [Psych0naut](#) [Yes, SWIM based to a pH of...](#) 05-10-2006, 05:42
-  [English\\_T](#) [isn't there a no source...](#) 05-10-2006, 09:14
-  [Psych0naut](#) [Yes, except for very common...](#) 05-10-2006, 09:35
-  [stoneinfoocus](#) [Swim thinks there `s something...](#) 05-10-2006, 17:00
-  [Psych0naut](#) [What's wrong with it then?](#) 05-10-2006, 20:04
-  [Psych0naut](#) [It should, but the clamp was...](#) 06-10-2006, 14:31

Prev   Next

 04-10-2006, 18:08

#1  



[Psych0naut](#)   
Psychedelic Voyager  
Platinum Member

Join Date: 27-02-2006  
Location: Netherlands  
Posts: 2,427



### Pseudo-ephedrine extraction

SWIM went to Great-Brittain 2 months ago, where pseudo-ephedrine is still OTC(it isn't in SWIMs country), so ofcourse, SWIM bought a few packs.

He bought one pack Sudafed Dual Relief Max containing 24 pills of 30 mg + 200 mg ibuprofen, and 2 packs Boots Nasal Decongestion containing 48 pills of 60 mg.

SWIM was a bit stupid for not reading the ingredients of the pack of Sudafed, which he found out later that they also contained ibuprofen, which made the extraction more difficult.

SWIM already used a few Sudafed pills for his runny nose, what they are made for, and he forgot how much he had dissolved at the time of the extraction, he estimated it was about 3000-3300 mg.

SWIM had already dissolved the Sudafed pills, and filtered, for as far as possible, out all the binders and the ibuprofen.

With the following extraction only the Boots pills where used, which where dissolved in the water where the Sudafed pills had been dissolved in before the extraction.

Here is the extraction with pictures:



The pills SWIM extracted the pseudo-ephedrine from.



The 48 pills removed from the blister strips, the pills only contained pseudo-ephedrine and some binders, no other actives.



The pills were crushed to a very fine powder in a mortar and pestle, so all the pseudo-ephedrine would dissolve.



The crushed pills were added to the same water the Sudafed pills had previously been dissolved in, and were heated at 80° celsius on a hotplate for half an hour so everything dissolved.

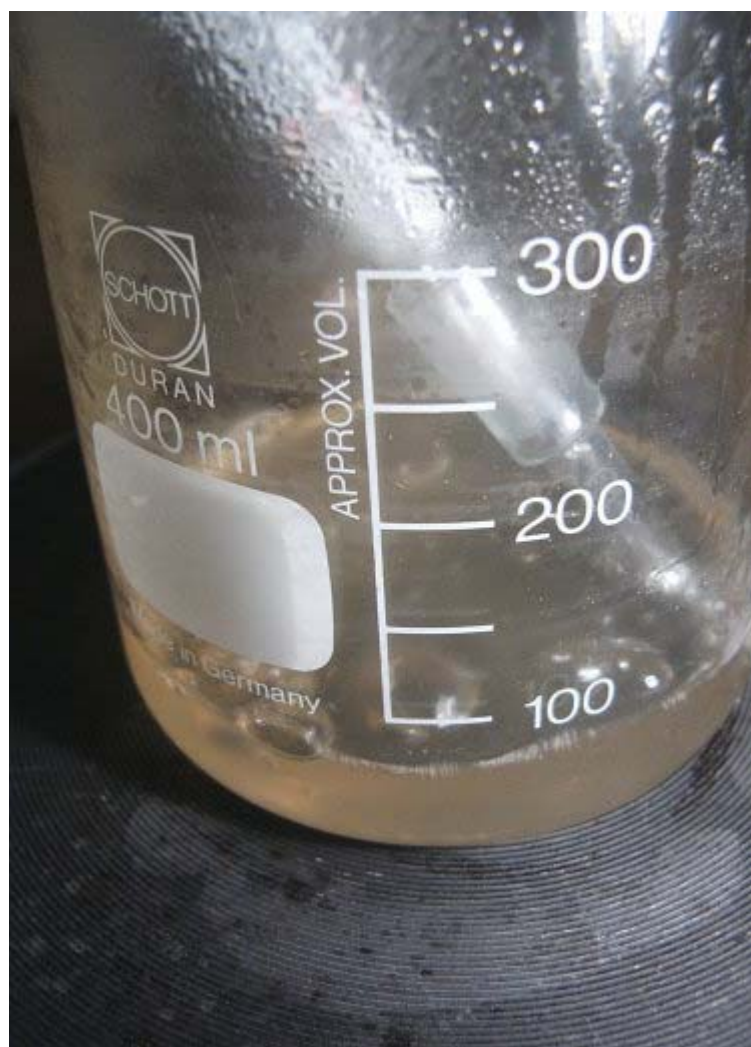
SWIM used so much water on purpose, so he wouldn't waste much pseudo-ephedrine on filtering.



SWIM didn't had acces to all his lab equipment at the time of the extraction, so he just used a coffee filter with a funnel instead of his büchner with carbon filter paper.



There was still a lot of gunk dissolved in the water after filtering, and the bitter smell of ibuprofen was still present.



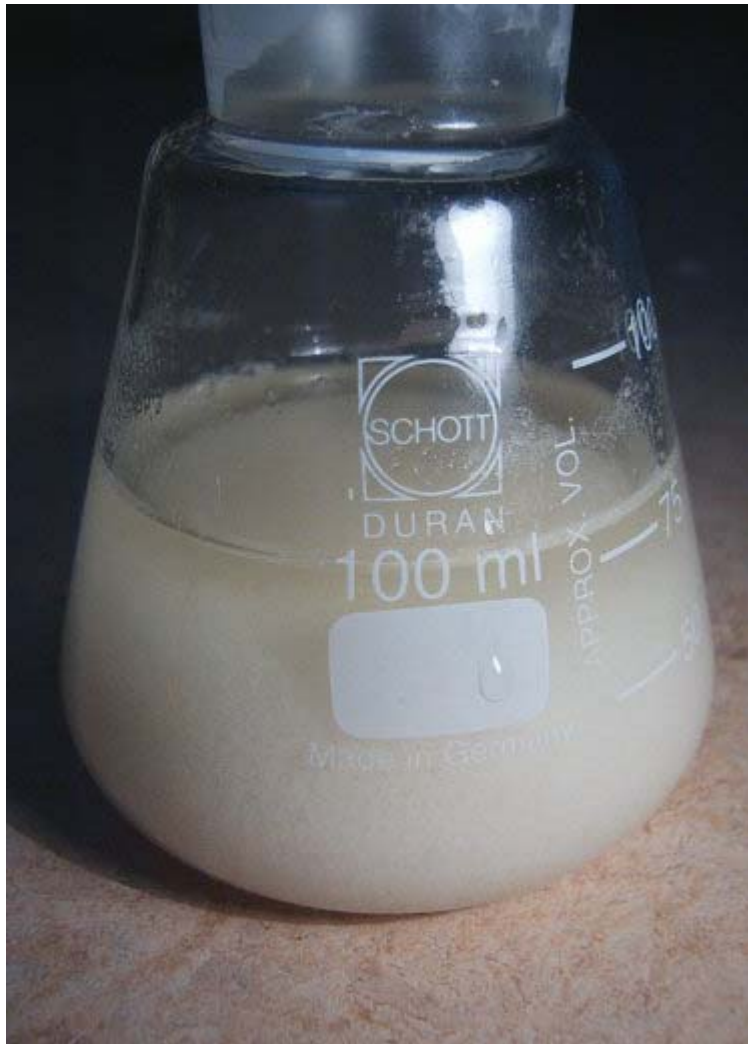
SWIM realised that, even though ibuprofen is ver insoluble in water, there would dissolve some in half a liter of water, though you only need a small amount of water to dissolve the pseypo-ephedrine.

So SWIM put his flask on the hotplate and boiled it down for a large part, from ~400 ml to 25.



After boiling it down, SWIM filtered the solution, and poured in into a smaller erlenmijer. You can see very clearly that the color of the solution changed from light blue/grey to orange.





The solution was basified to a pH of ~12 with a lye solution. With every drop SWIM added, a cloud of free base came out of solution, and when SWIM added all of the lye solution, the whole flask was saturated with the white free base.



SWIM added small amounts of dichloromethane to extract the base, and swirled the flask, after which all of the free base dissolved and the solution became transparent again.



SWIM extracted a total of 3 times with dichloromethane, and seperated the layers with his seperatory funnel which he could luckily still acces.He put away the water layer for a second extraction.



SWIM combined the extracts and titrated with a hydrochloric acid solution, he accidentally added too much, but it didn't have any negative effect on the endresult.

It isn't very easy to see on this foto, but the hydrochloric acid solution has already been added, which floated on top of the dichloromethane layer.

SWIM shook the solution as good as possible, so all of the base would come in contact with the hydrochloric acid and formed the hydrochloride salt of pseudo-ephedrine.



SWIM separated the layers, and threw away the dichloromethane layer, and kept the hydrochloric acid solution which contained the pseudo-ephedrine HCl salt.

He boiled it down on his hotplate, but forgot he left it on the hotplate and when he went back to have a look the solution was completely boiled down and the crystals were lightly burned.

You can see it on the photo that it's slightly burned because pseudo-ephedrine HCl crystals should be white, and these crystals have a caramel color.



SWIM washed the crystals with dry acetone once, which resulted in very fine, glinstering crystals. SWIMs yield was ~1800 mg  
SWIM did another extraction on the basified solution he had put away, which yielded ~250 mg, so in total it was 2050 mg.  
After drying it appeared to be 1880 mg, so it's a total yield of aprox. 60%.

---

The Netherlands is a country below sea-level, we would drown if we wouldn't stay high all the time ..

---

*Last edited by Psych0naut; 04-10-2006 at 20:27.*

**Tags**

Edit Tags

*None***Quick Reply**Message:

**Quick Reply****Options** Quote message in reply? Show your signature[« Previous Thread](#) | [Next Thread »](#)**Posting Rules**

You **may** post new threads  
 You **may** post replies  
 You **may** post attachments  
 You **may** edit your posts

[BB code](#) is **On**  
[Smilies](#) are **On**  
[\[IMG\]](#) code is **On**  
 HTML code is **Off**

**Forum Jump**

**Similar Threads**

Thread	Thread Starter	Forum	Replies	Last Post
<a href="#">TEK: Salvia Extract w/ pics</a>	outriderx	Salvia divinorum	2	09-04-2008 17:40
<a href="#">Methamphetamine Synthesis Via HI/Red Phosphorous Reduction of Ephedrine</a>	outriderx	Methamphetamine Chemistry	2	05-12-2007 05:18
<a href="#">Salvia Divinorum Extractions</a>	Alfa	Chemistry of Other Drugs	9	14-09-2007 13:23
<a href="#">Ephedrine: Synthesis, extraction and esterification</a>	outriderx	Methamphetamine Chemistry	0	26-08-2007 17:20
<a href="#">Methamphetamine Synthesis Via HI/Red Phosphorous Reduction of Ephedrine</a>	outriderx	Methamphetamine Chemistry	0	11-06-2007 15:58

All times are GMT. The time now is 22:38.

[Contact Us](#) - [Drugs-forum](#) - [Archive](#) - [Links](#) - [Top](#)

Copyright: Substance Information Network 2003 - 2008, All rights reserved