

NOTICE

The purchaser agrees when purchasing this plan (the "Plan"); the purchaser has acquired the right to build or construct the project or project set out in the Plan for personal use only and not for any commercial use. 2) reproduction of the Plan in whole or in part by any means whatsoever is strictly prohibited. The Headman shall not be liable for any willful misuse or negligent use of this plan, the Project or any tools used to construct the Project or for any loss or damage resulting therefrom.

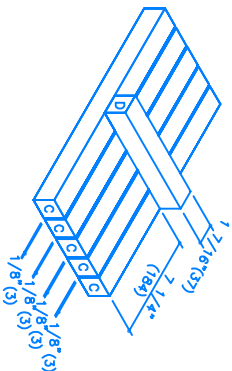
NOTE: Read all directions before beginning

Carpenter's Glue should be used to reinforce all joints
Set all nails and countersink all screws

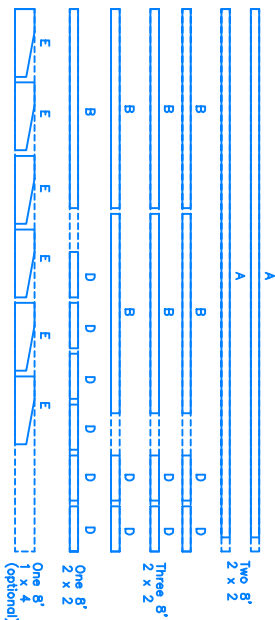
Directions

- 1) Lay out your material as outlined in the material layout (Fig 1) and then cutting diagram (Fig 2). Measure out all pieces exactly as illustrated including the letter designations in pencil. Ensure to leave a small space between cut lines to allow for the width of the saw. Before cutting, double check all measurements to ensure that they are correct. Always cut on the waste side of the line. Bevel all ends of the 2x2 slightly with sandpaper to give them a "finished look". If you are building the floor to ceiling model, measure the height of your ceiling. Pieces A should be cut to be, at the least, 2 1/2" less than this measurement.
- 2) Follow this step for the floor to ceiling model. If you are building the free standing model, proceed directly to step 3. Drill a 1/2" hole in both ends of pieces A as shown (Fig 3). Insert a 1/2" x 4" bolt in the hole to test for fit, it should fit snugly. Remove bolt, screw two nuts onto each bolt, about halfway, and glue on the casters. Reinsert the bolt and nuts into the hole and glue on the nuts. The end of the bolt that is protruding from the hole should be flush with the end of the bolt. By moving the nuts up and down on the bolt you can adjust the length of pieces A and thereby fit piece B tightly against your ceiling.
- 3) Place both pieces A on the floor, the centers 17 3/4" apart. Blunt the ends of the finishing nails to prevent your wood from splitting. Start nailing in pieces B, four 2 1/2" nails each, two for each side 1/2" from each edge and 1/2" apart, 8 3/4" from each end as shown (Fig 4). Nail the top piece B to A, with the four 2 1/2" finishing nails as shown (Fig 3). Mark three marks on each A, going 24" down each time, and starting at the top edge of B, for the first measurement. Ensure the bottom ends of A are 17 3/4" apart at the centers, and nail on the three pieces B with the six 2 1/2" nails you previously started. Turn the unit over, and repeat for the other pieces B.
- 4) Line pieces C up with the ends flush and 1/8" separating time. Place piece D on top of the pieces C as shown (Fig 5). 7 1/4" from either end, and nail into pieces C with 2 1/2" finishing nails. You may want to pre-drill holes for the nails to prevent the material from splitting. Repeat to build the other eleven shelves.

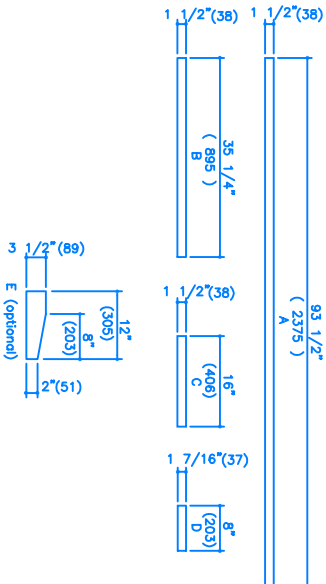
OTHER



SHELF DETAIL
FIGURE 5



MATERIAL LAYOUT
FIGURE 1



CUTTING DIAGRAM
FIGURE 2

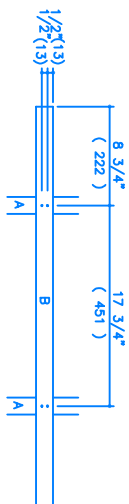
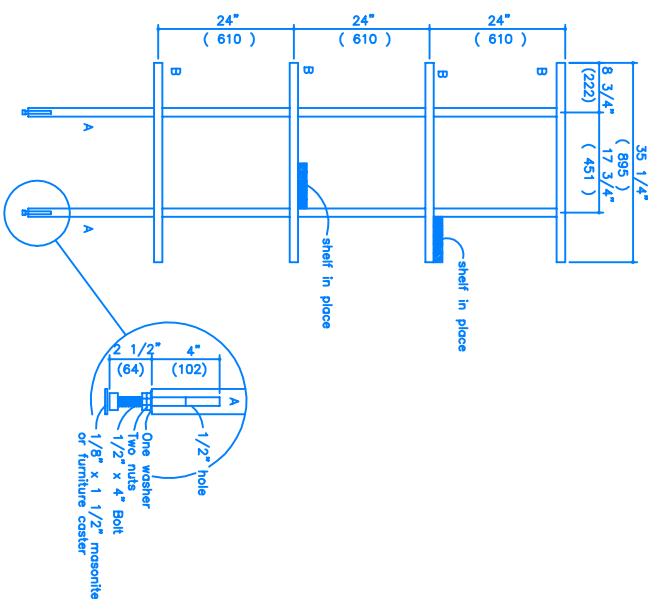


FIGURE 4



ELEVATION
FIGURE 3

MATERIALS LIST (FLOOR TO CEILING MODEL)

Two 1/2" x 4" NC bolts
Two 1/2" washers
Four 1/2" nuts
Two 1 1/2" round pieces masonry or furniture casters

MATERIALS LIST (FLOOR STANDING MODEL)

Approx. twenty five 2 1/2" #8 finished screws
One 7" 1x4 (3/4" x 3 1/2")
Six nail glides

MATERIALS LIST (GENERAL)

Eighteen 8" 2x2's (1 1/2" x 1 1/2")
Approx. 1 lb. 2 1/2" finishing nails
Stain and varnish, or oil
Carpenter's glue
Sandpaper