

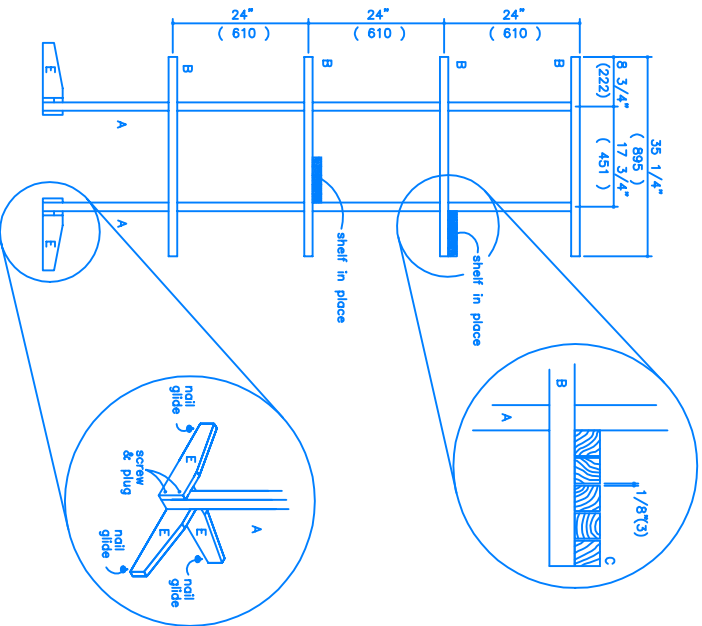
5) Follow this step for the free-standing unit. Pre-drill two 1/8" holes in the wide end of each piece E, 3/4" from the end. You will have to offset them somewhat to prevent their hitting each other when screwed into A. On one piece E drill 1/2" from each top and bottom edge on another drill 3/4", and on the third drill 1". Countersink the holes on with a 1/4" drill bit. Place against A and drill through the holes and into A with a 1/16" drill bit, going 1" into A. Glue and screw the three pieces E to each A with six 2 1/2" #8 flathead screws. Install one nail glide onto each piece E. 6) Sand the unit. Set the nails with a nail set to drive the nail heads slightly below the surface. Fill the nail holes with wood putty, as well as the screw holes if you have made the free-standing model. Finish with stain and varnish, or oil. The shelves can be placed whenever you like by simply placing D on the shelves and B. You can even screw the shelves into A if you wish or install hanging planters by screwing eye hooks into B. To build the hanging planter shown, see our "Planters" project.

**On materials:**

The materials for this project should not be warped, nor should there be knots that run the width of the boards. 2 1/2" #8 flathead screws can be substituted for nails if added strength is desired.

**TOOLS**

- Table Saw and Measuring Tape
- Pencil
- Forstner Drill Bit
- 1/16" and 1/8" and 1/4" 1/2" drill bits
- Hammer and Screwdrivers
- Square and Nail Set
- Plane and Wood Chisels
- Paint Brush and Putty Knife



**ELEVATION**  
**FREE STANDING (optional)**  
**FIGURE 6**

